



The Geological Society Hospitality and Accessibility Guide

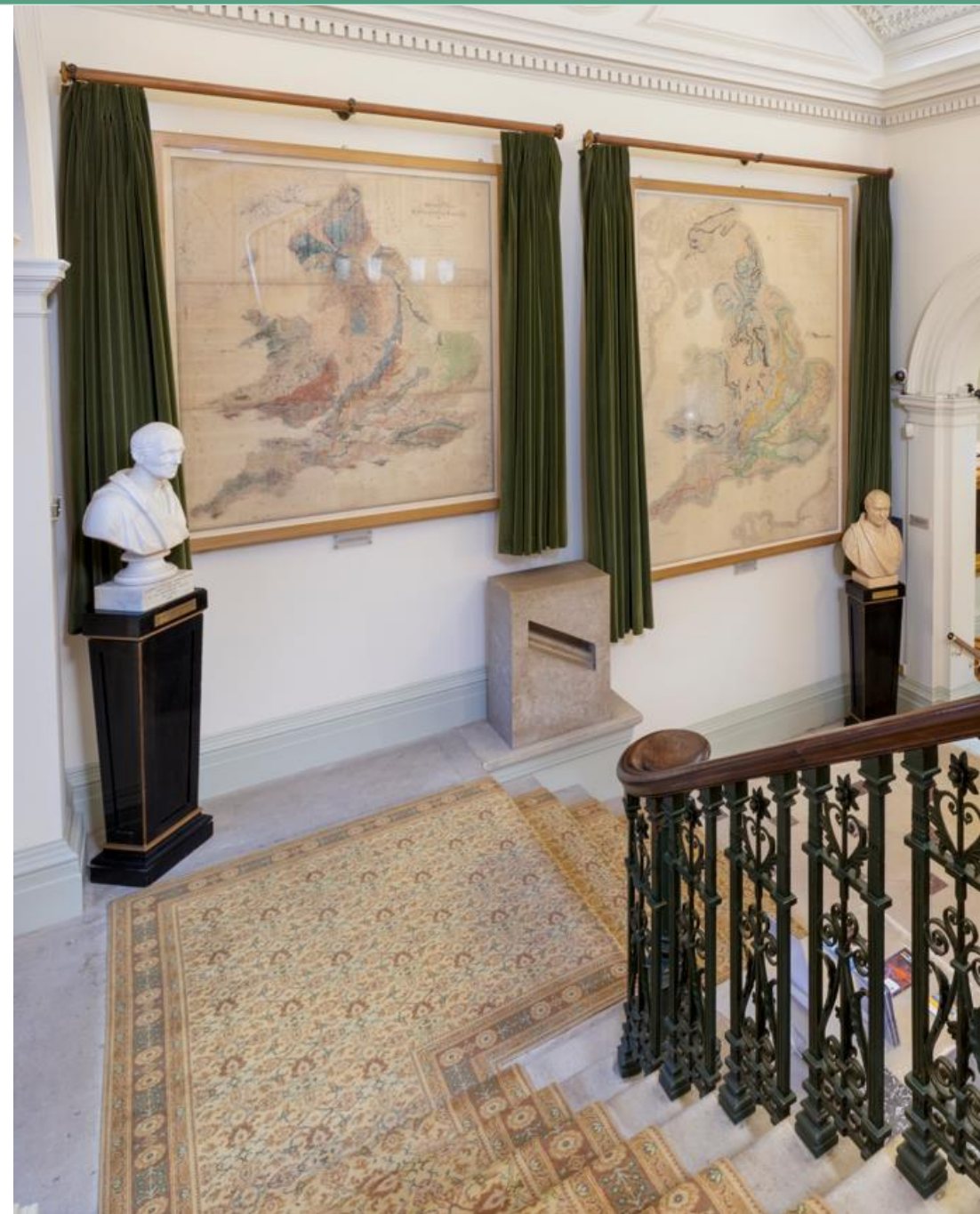


The
Geological
Society

Welcome to The Geological Society

Founded in 1807, the Geological Society of London is the oldest geological society in the world. It plays a key role in science communication through the publication of books and journals, providing access to its extensive library collections, education and public outreach activities, and hosting scientific conferences.

The Geological Society is located at Burlington House, Piccadilly, London, W1J 0BG. Positioned between Piccadilly Circus and Green Park Underground stations, it is easily accessible with four nearby bus stops. There are numerous quality hotels in the Piccadilly area and a variety of restaurants within easy reach, offering ample dining options.



Local Accommodation

When holding an event at the Geological Society in Burlington House, Piccadilly, you'll find a range of accommodation options to suit your needs. From hotels offering essential amenities to luxurious establishments with premium services, the area around Piccadilly offers a diverse choice. This ensures that all guests can find suitable accommodations within easy reach of the venue. We have selected a range to support you below:

Z Hotel Piccadilly (rates from £60)

Address: 2 Orange St, London WC2H 7DF

Contact: +44 (0)20 3551 3720

Enquiry: <https://www.thezhotels.com/contact-us/>

Website: <https://www.thezhotels.com/hotels/piccadilly/>



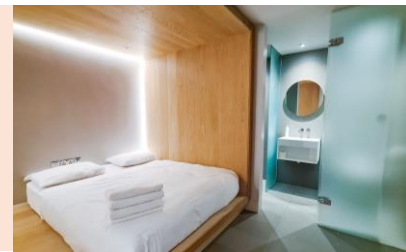
Zedwell Piccadilly Circus (rates from £180)

Address: Great Windmill St, London W1D 7DH

Contact: +44 (0) 020 7096 5414

Enquiry: <https://www.zedwellhotels.com/location>

Website: <https://www.zedwellhotels.com>



The Dilly (rates from £380)

Address: 21 Piccadilly, London, W1J 0BH

Contact: +44 (0)20 7734 8000

Enquiry: <https://www.thedillylondon.com/contact>

Website: <https://www.thedillylondon.com/>



The Cavendish London Hotel (rates from £450)

Address: 150 Piccadilly, St. James's, London W1J 9BR

Contact: +44 (0)20 7493 8181

Enquiry: reception@thecavendishlondon.com

Website: <https://chesterfieldmayfair.com/>



1 Hotel Mayfair (rates from £650) **Address:**

3 Berkeley St, London W1J 8DL **Contact:**

+44 (0)20 398 80055

Enquiry: <https://www.1hotels.com/contact-us>

Website: <https://www.1hotels.com/>



The Ritz London (rates from £960)

Address: 150 Piccadilly, St. James's, London W1J 9BR

Contact: +44 (0)20 7493 8181

Enquiry: enquire@theritzlondon.com

Website: <https://www.theritzlondon.com/>



Local Restaurants

Burlington House is in the heart of London's city centre, near Piccadilly Circus. Within easy walking distance, you'll find a variety of dining options. The surrounding area offers everything from high-end restaurants for a glamorous night out to casual eateries for a relaxed meal. We have selected a range to support you below:

Notto Pasta Bar Piccadilly

££ · Italian restaurant

Michelin-starred chef Phil Howard bringing great pasta to Piccadilly

<https://www.nottopastabars.com/>

198 Piccadilly, London W1J 9EZ



FishWorks

££ · Seafood restaurant

The freshest fish coming from Brixham market daily

<https://www.fishworks.co.uk/>

7-9 Swallow St, London W1S 3DE



Langan's Brasserie

£££ · French restaurant

Time-tested brasserie for classic Anglo-French cuisine

<https://www.langansbrasserie.com/>

Stratton St, London W1J 8LB



Cafe Murano St James

£££ · Italian restaurant

Authentic Italian dining in the heart of St James's

<https://www.cafemurano.co.uk/>

33 St James's St, London SW1A 1HD



The Wolseley

£££ · British restaurant

Café-restaurant on London's iconic Piccadilly offering all-day dining

<https://www.thewolseley.com/>

160 Piccadilly, London, United Kingdom W1J 9EB



Gymkhana

££££ · Indian restaurant

Classic Indian cuisine, awarded Two Michelin stars in 2024

<https://gymkhanalondon.com/>

42 Albemarle St, London W1S 4JH



Venue Accessibility Information

Address: Burlington House, Piccadilly, London, W1J 0BG

Email: venuehire@geolsoc.org.uk

Contact: +44 (0)20 7432 0956

The Geological Society aims to make all visitors to Burlington House feel welcome by providing support and creating as friendly and accessible an environment as possible.

Mobility:

- Wheelchair ramps are available to aid access from the main entrance on Piccadilly and the Reception desk upon request.
- Lift access is provided across the basement and first floors, where the Lecture Theatre and the meeting rooms are located.
- Lift door: 850mm (w), lift car dimensions: 1,375mm (w) x 815mm (d)
- The Lecture Theatre is accessible for wheelchair users.
- Accessible toilets are located on the ground and first floors.
- A loading bay is available in the Burlington House courtyard for short-stay drop-offs and pick-ups.
- Free parking spaces in the Burlington House courtyard are available (please book at least two working days in advance of the visit).

Please note that if a visitor is unable to use stairs for evacuation during an emergency, they will need to be positioned on the ground floor at Burlington House during events. This is to ensure their safety within the building.

Hearing:

- A hearing assistance system is fitted in the Lecture Theatre. The hearing system is a fixed induction loop. Look out for the T-loop symbol.

Visibility:

- Our lift features a control panel with embossed text and audio announcements.
- Guide, assistance and hearing dogs are welcome.